



MULTICONTACT AUXILIARY RELAY
12HFA99AD(-)
TYPE HFA

INTRODUCTION

This supplement in addition to the GEH-2024 instruction book constitutes the instruction for the 12HFA99AD(-)relay.

DESCRIPTION

Relay 12HFA99AD(-) is similar to the auxiliary relay 12HFA51A(-)F except for the following.

1. It has short gap and extra hard contact springs in top position of contacts 1, 2, 4 and 5 to minimize contact bounce.
2. It has a normally closed contact at position 3.
3. It is provided with an external resistor.
4. Its Internal Connections Diagram is shown on Figure 1 of this supplement.

RATINGS

FORM	VOLTS	COIL RES. (OHMS) 25°C	EXT. RES. (OHMS) 25°C
001	125 VDC	21	200

These instructions do not purport to cover all details or variations in equipment nor to provide for every possible contingency to be met in connection with installation, operation or maintenance. Should further information be desired or should particular problems arise which are not covered sufficiently for the purchaser's purposes, the matter should be referred to the General Electric Company.

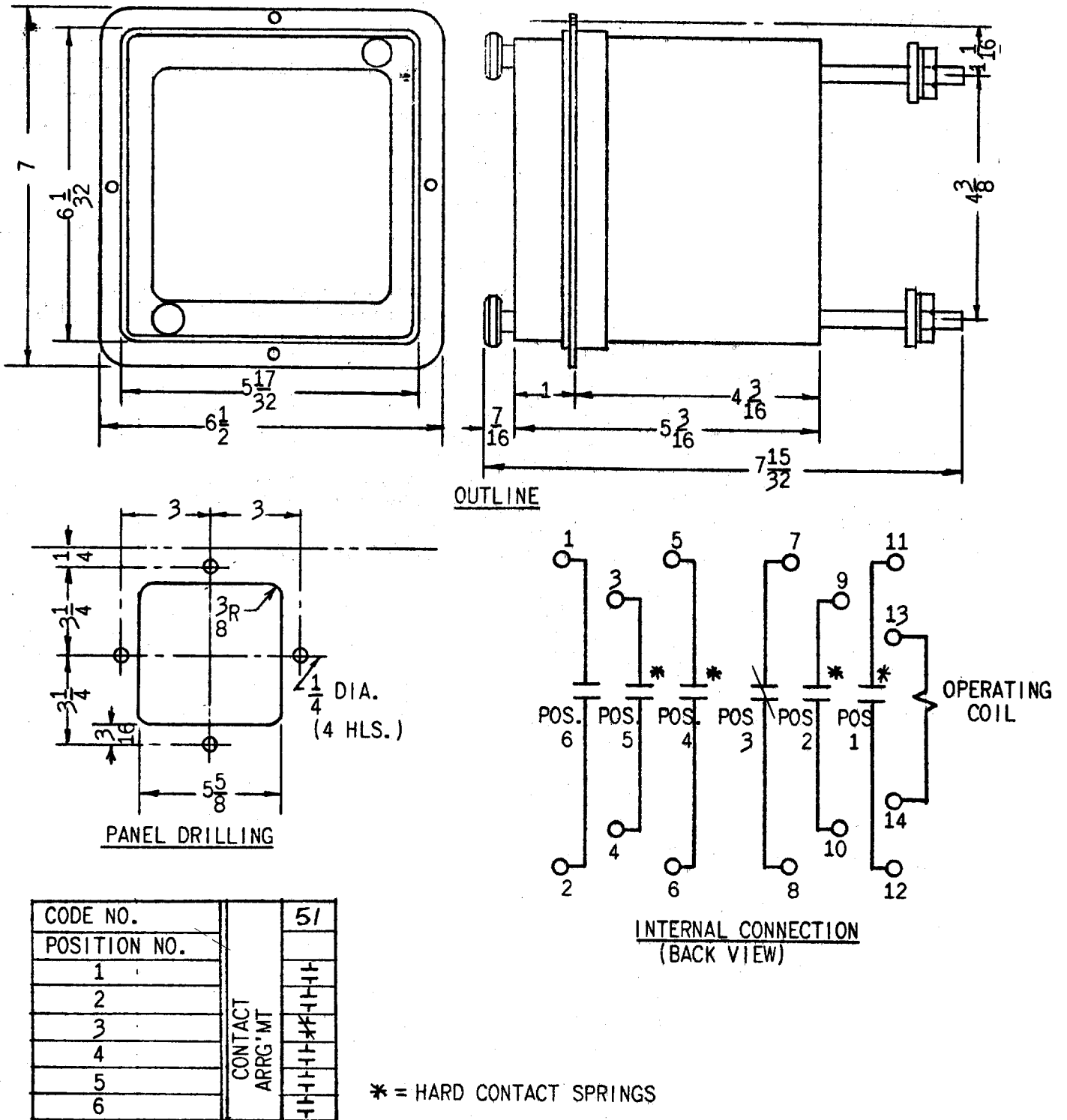


FIG. 1 (0257A5065-0) INTERNAL CONNECTIONS DIAGRAM OF RELAY TYPE 12HFA99AD(-)