



INSTRUCTIONS

GEK-86083
Insert Booklet GEK-86044A

SLS1192A

MODULAR RELAYING SYSTEM FOR

TRANSMISSION LINE PROTECTION

INTRODUCTION

This instruction book, together with insert booklet GEK-86044A, forms the instructions for the SLS1192A system.

DESCRIPTION

The SLS1192A is similar to the SLS1102A except it contains an additional auxiliary relay which provides an output contact for a lockout alarm. The contact closes under recloser lockout conditions. It operates in unison with the L/O LED on the RLM101 module.

The additional relay is located on the ROM104 module which is used in place of the ROM101 module provided on standard SLS models.

Connection to the lockout alarm contact should be made according to Figure 1 of this booklet.

These instructions do not purport to cover all details or variations in equipment nor to provide for every possible contingency to be met in connection with installation, operation or maintenance. Should further information be desired or should particular problems arise which are not covered sufficiently for the purchaser's purposes, the matter should be referred to the General Electric Company.

To the extent required the products described herein meet applicable ANSI, IEEE and NEMA standards; but no such assurance is given with respect to local codes and ordinances because they vary greatly.

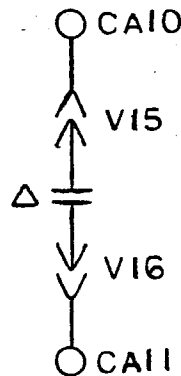
GENERAL INFORMATION

AC RATINGS: 5A, 110V, 50HZ

- FEATURES: 1. STANDARD DISTANCE RELAY AND RECLOSER
2. DIRECTIONAL COMPARISON BLOCKING
3. REVERSE ZONE 5 WITH TIMER
4. LOCKOUT ALARM OUTPUT CONTACT

CONNECTIONS

CONNECT ACCORDING TO 0138B7593; IN ADDITION, THE FOLLOWING CONTACT IS AVAILABLE FOR EXTERNAL CONNECTION:



LOCKOUT ALARM

(Δ) CONTACT RATED 30VA WITH L/R = 0.04

Figure 1 (0285A7515-0) Elementary Supplement for SLS1192A